



Department of
Environmental
Conservation

Long Island Regional
Planning Council

Long Island Nitrogen Action Plan Nassau County Subwatershed Planning

Lorraine Holdridge, P.E.

Division of Water, Bureau of Water Resource Management

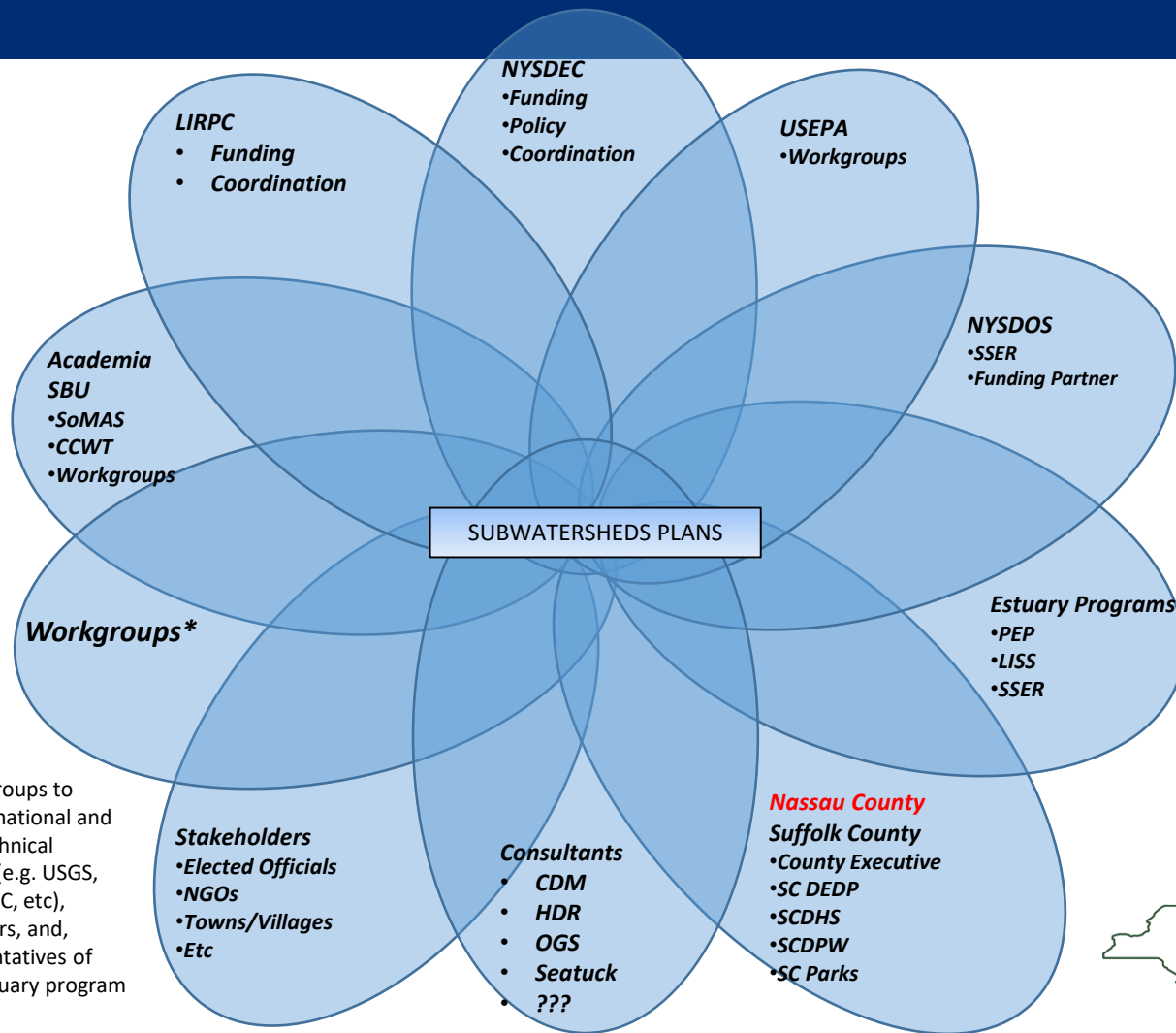
April 20, 2017

LINAP to Address Nitrogen in LI Waters

The goals of the Long Island Nitrogen Action Plan include:

- Identify and quantify sources of nitrogen pollution to the waters of Long Island
- Identify ecological endpoints to protect and restore the waters of Long Island
- Establish estuarine or embayment specific nitrogen loading targets
- Identify actions that will reduce nitrogen pollution to groundwater and surface waters





*Workgroups to include national and local technical experts (e.g. USGS, SBU, TNC, etc), regulators, and, representatives of each estuary program



Subwatersheds Plan Scope of Work

- Groundwater Modeling & Subwatersheds Baseflow Estimates (USGS 2017)
- Data Inventory and Literature Review (SC/LINAP)
- Nitrogen Load Estimates
 - Load to Groundwater (SoMAS & DEC)
 - Load from groundwater to surfacewater (TBD)
 - Load from Stormwater (TBD)
- Surface Water Modeling (SoMAS)
- Tiered Priority Areas (SoMAS)
- Nitrogen Endpoints (SC/LINAP)
- Reduction Goals (TBD)
- Surface Water Wastewater Alternatives (TBD)
- Groundwater Reduction Goals for Drinking Water Protection
- Alternatives Cost Benefit Analyses (TBD)
- Subwatershed Plan (TBD)
- GEIS

Green = underway Yellow = RFP under development

Purple = underway in SC, must integrate with NC

Black = Not started Red = Is this needed in NC?

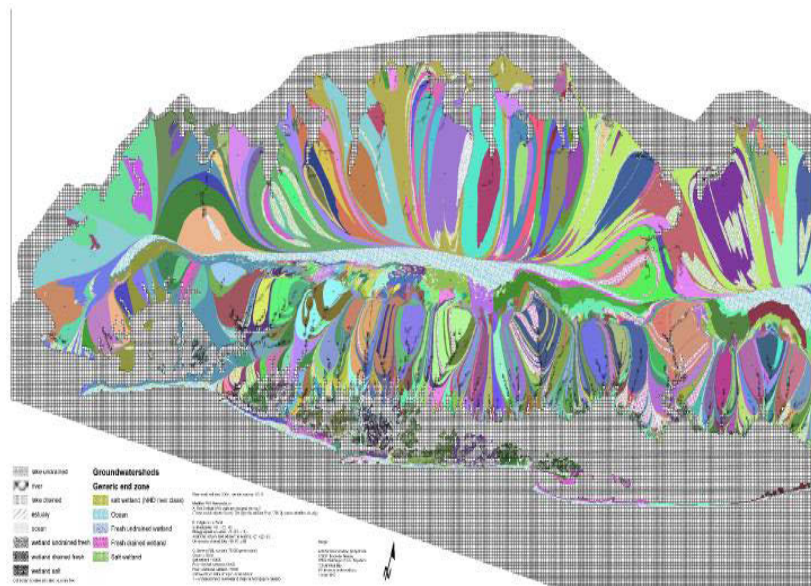
Long Island Regional
Planning Council



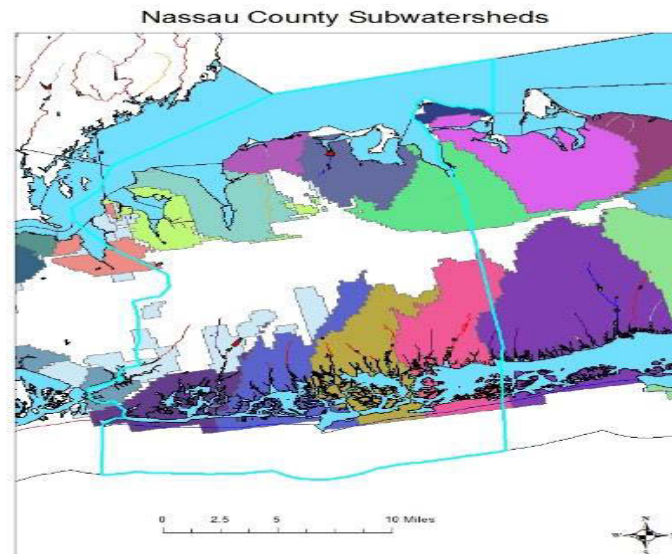
Department of
Environmental
Conservation

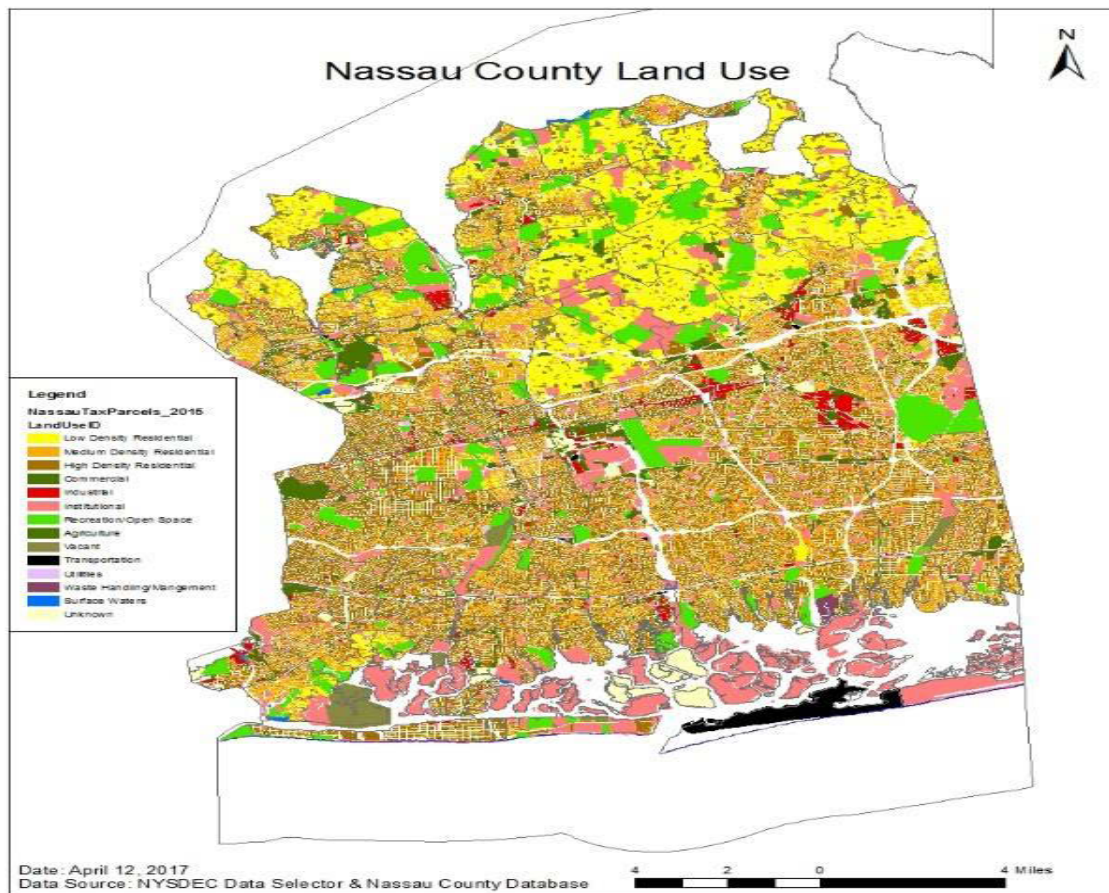
Subwatershed Defined by Groundwatersheds

Updated USGS
Groundwatersheds (2017)



Currently Available USGS
Groundwatersheds (1980's)





Department of
Environmental
Conservation

