



# Long Island Greenway

Presentation to the Long Island Regional Planning Council  
February 15, 2023



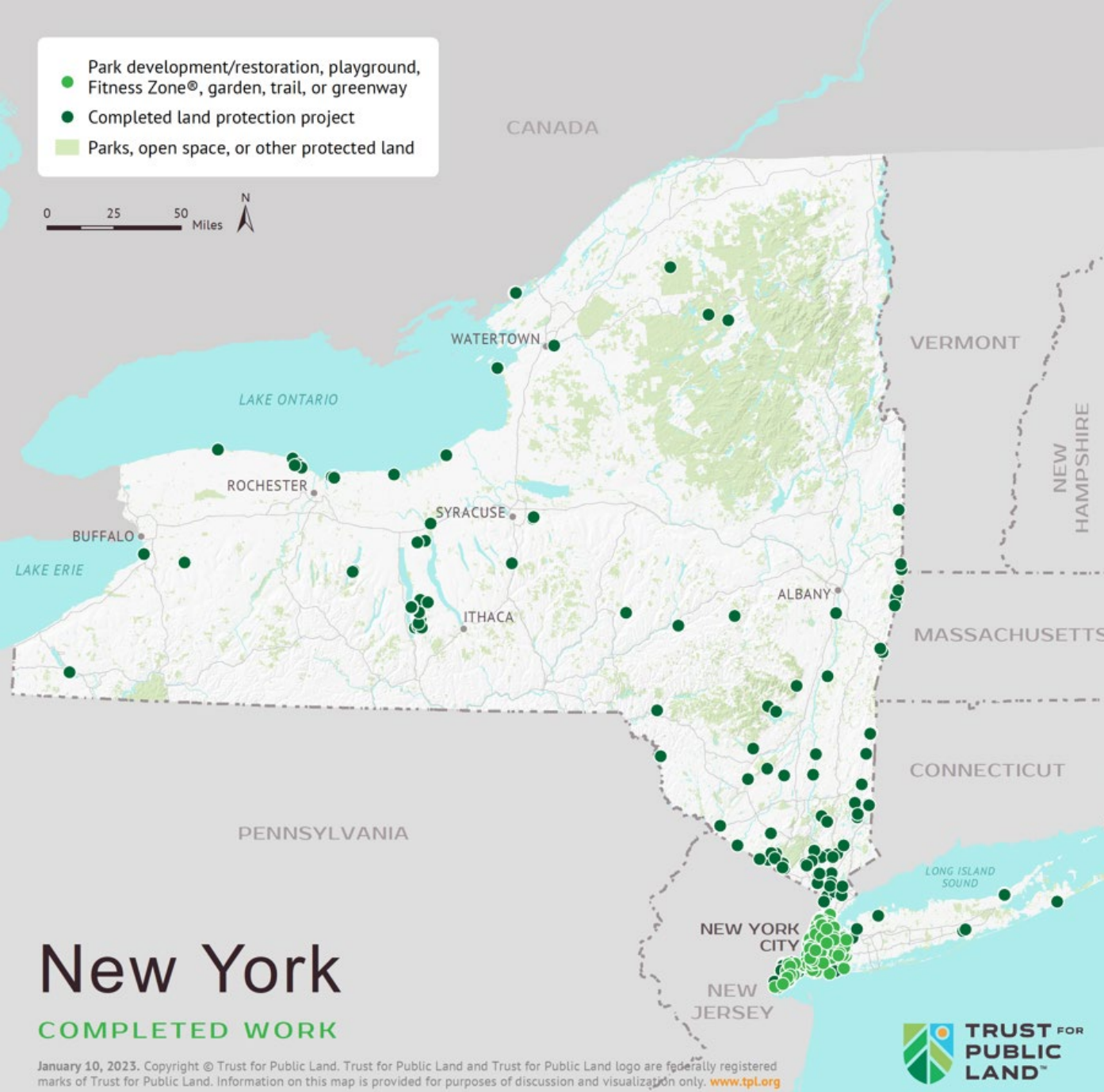
# Agenda

- Background about TPL, Empire State Trail, Utility Line Trails
- Long Island Greenway Vision
- Long Island Greenway Central (Phase 1)
- Long Island Greenway East End (Phase 2)





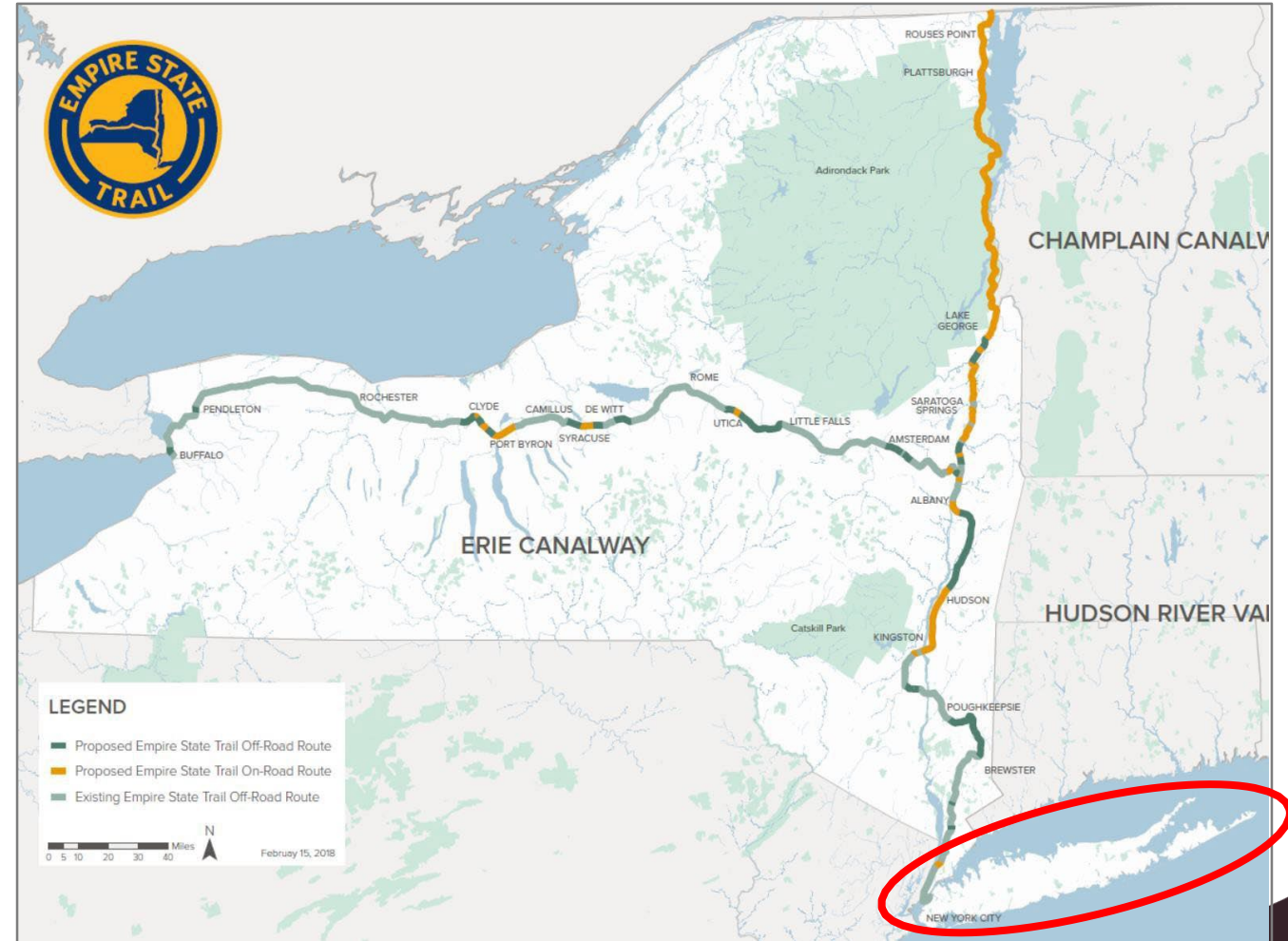
# TPL: Tangible Impact in New York



- **1978** office established
- **124,000** acres protected (225 projects)
- **70** community gardens protected
- **246** playgrounds and parks created
- **\$6+ billion** in public funding (two statewide bonds, many local community protection funds)
- **5.3 million** people within a 10-minute walk
- **15** Ten-Minute Walk cities

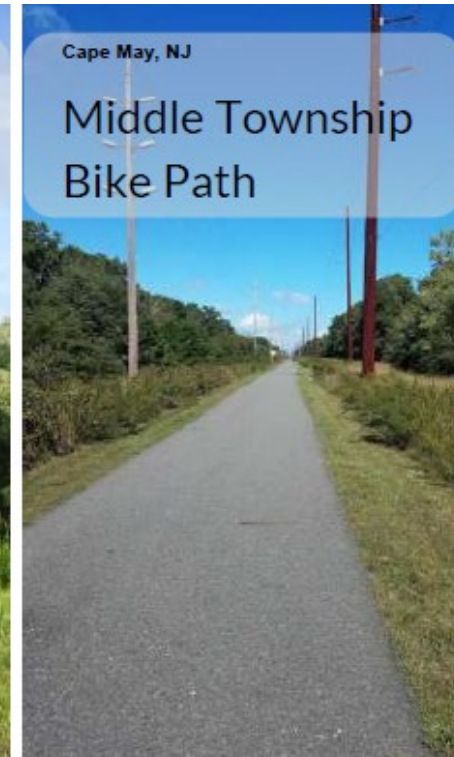
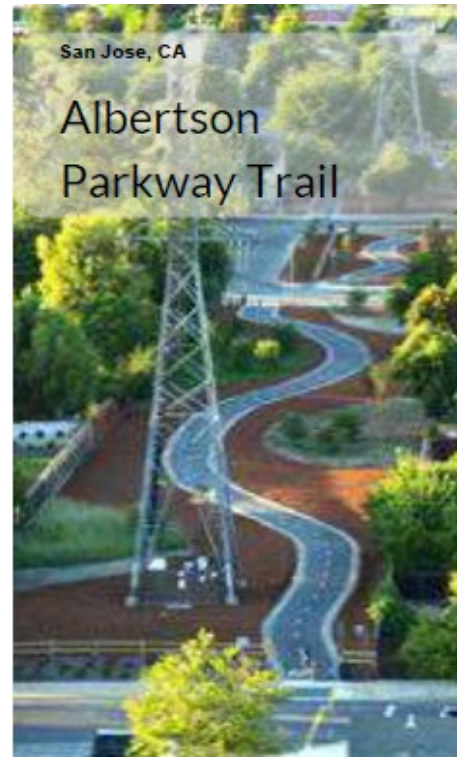
# Empire State Trail

- The Empire State Trail is a 750-mile trail connecting Buffalo, Plattsburgh, and NYC. It involved the construction of 350 miles of new trails with \$200 million in state funding.
- Leverages the high-growth outdoor recreation industry in New York:
  - \$41.8 billion in consumer spending
  - 313,000 direct jobs (4<sup>th</sup> highest sector)
  - \$14 billion in wages (10<sup>th</sup> highest)
  - \$3.6 billion in state, local tax revenue.
- Long Island is not yet included, but there is strong local, state, and federal support for extending the trail to reach the 8 million residents of Brooklyn, Queens, Nassau, and Suffolk Counties.





# Utility Line Trails



Successful examples of utility trails across the country include the Washington and Old Dominion Trail (VA), Middle Township Bike Path (NJ) and Albertson Parkway Trail (CA).



What if you could travel to **work**,  
the **grocery store**, or even  
**Montauk Lighthouse** without  
getting in your car?



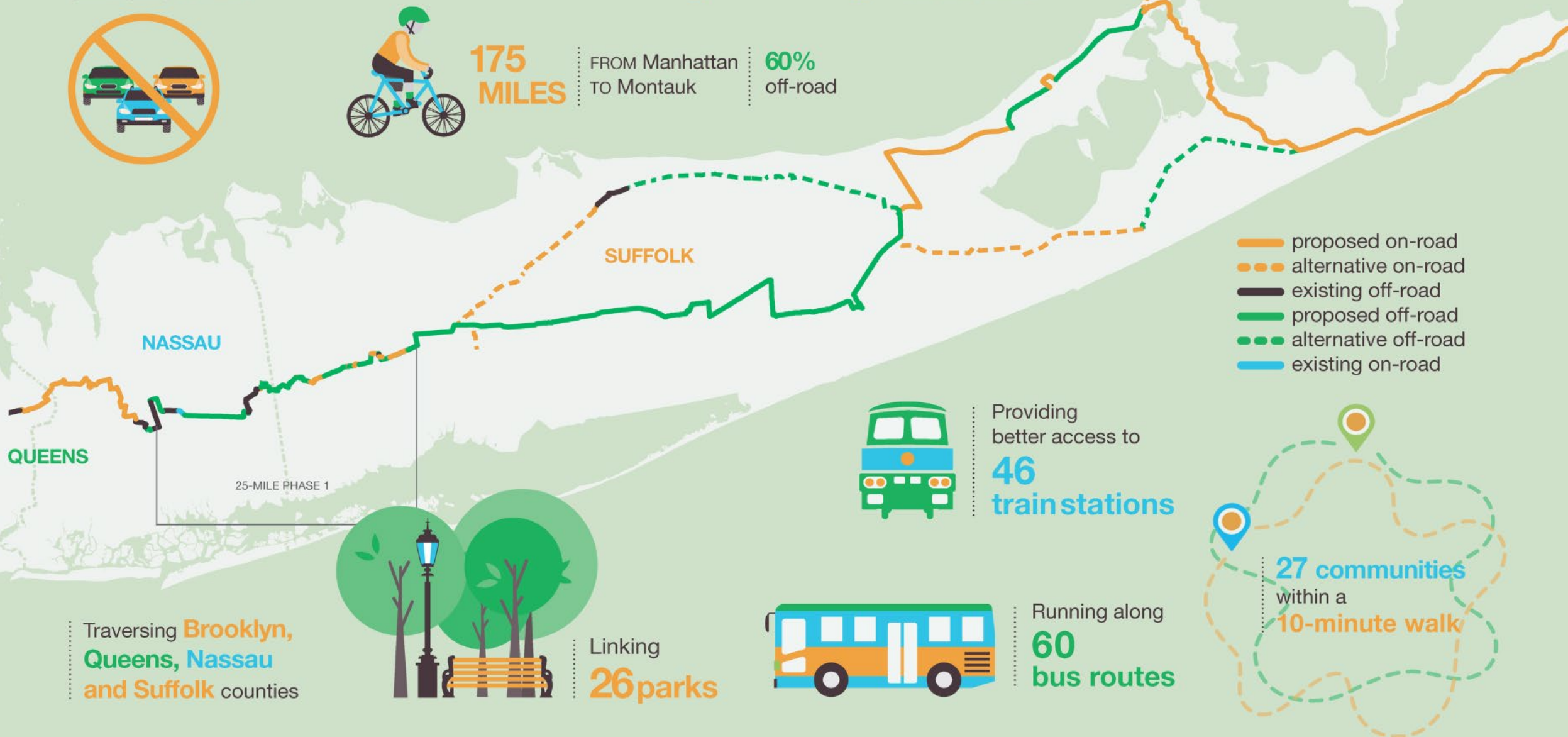
Welcoming  
**34 million**  
annual visitors



**175  
MILES**

FROM Manhattan  
TO Montauk

**60%**  
off-road



- proposed on-road
- alternative on-road
- existing off-road
- proposed off-road
- alternative off-road
- existing on-road



Providing  
better access to  
**46**  
train stations



Running along  
**60**  
bus routes



**27 communities**  
within a  
**10-minute walk**

Traversing **Brooklyn**,  
**Queens**, **Nassau**  
and **Suffolk** counties

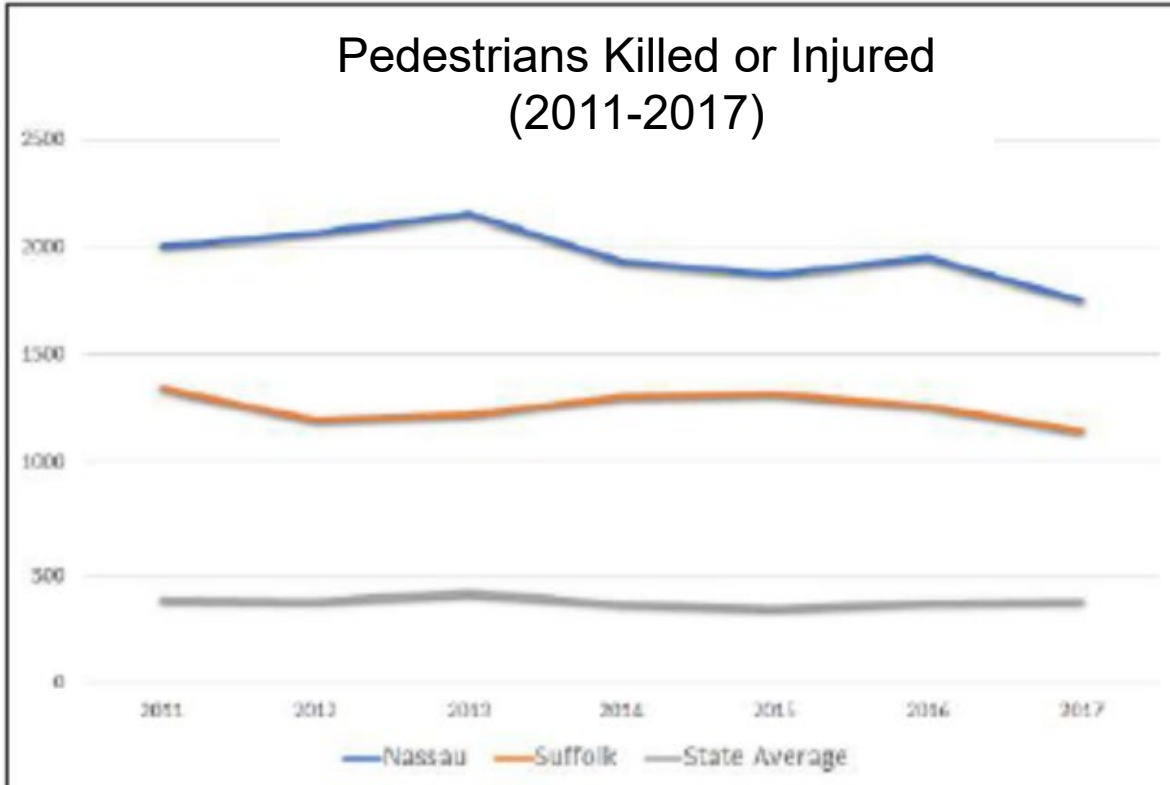


Linking  
**26 parks**

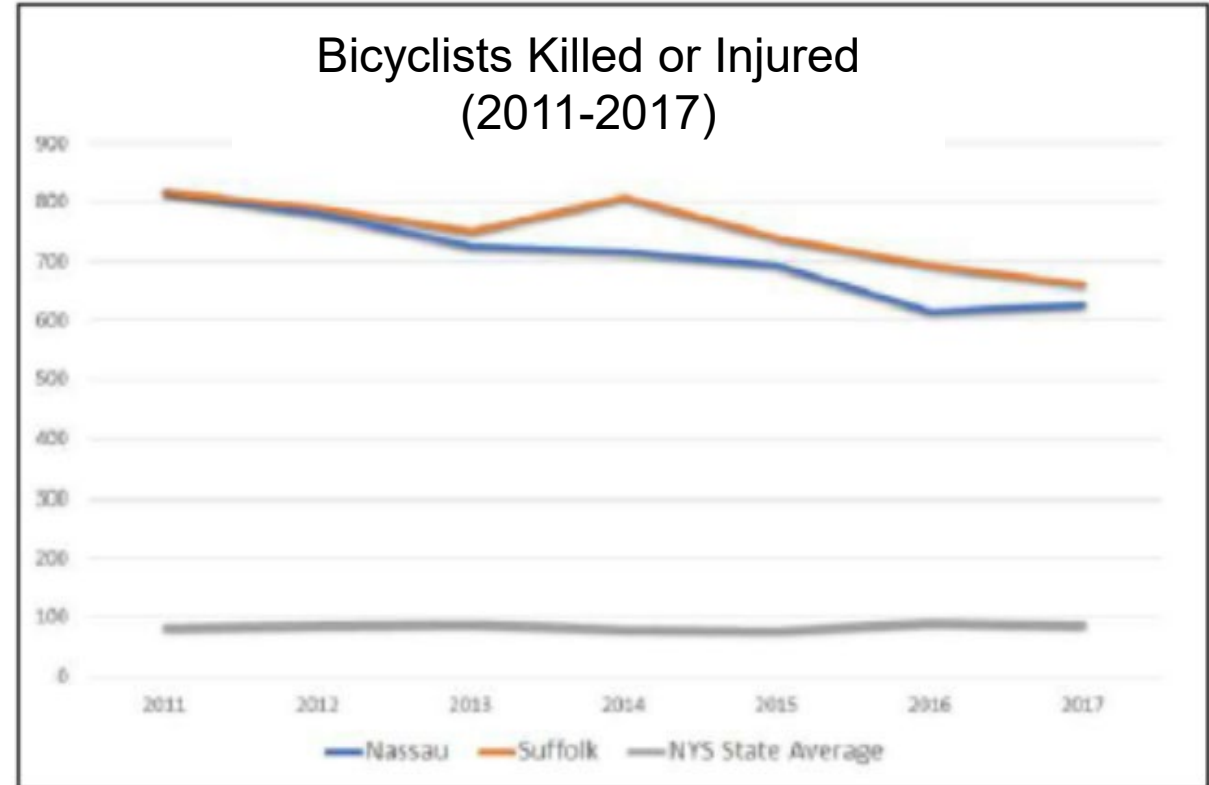


# Safety On Long Island

Pedestrians Killed or Injured  
(2011-2017)



Bicyclists Killed or Injured  
(2011-2017)





# Public Health on Long Island

## New York State Prevention Agenda 2019-2024

### Focus Area 2. Physical Activity

- Goals: reduce obesity and the risk of chronic diseases
  - Improve community environments that support active transportation and recreational physical activity for people of all ages and abilities.
  - Promote school, child care and worksite environments that increase physical activity
  - Increase access, for people of all ages and abilities, to indoor and/or outdoor places for physical activity.
- Objectives by 12/31/24
  - Increase participation in leisure-time physical activity
  - Increase walking or biking
  - Increase physical activity
- Interventions
  - Improved pedestrian, bicycle, or transit transportation system components (i.e., activity-friendly routes)



# Enhance Redevelopment Areas





# Transit Connectivity



# Business and University Connectivity





# Benefits

- **Leverage Federal and State Funding:** Once-in-a-generation opportunity from the federal IIJA and IRA, state Bond Act
- **Increase Connectivity:** Provide a transportation corridor connecting residential areas with downtowns, parks, trails, bus stops and LIRR stations, thereby reducing car traffic.
- **Create Sustainable, Equitable Communities:** Solidify the strong “sense of place” in the East End, facilitate walkable communities, and provide free and accessible transportation to those without cars.
- **Foster Public Health:** Provide a safe and trusted place to walk or bicycle that will promote an active and healthy lifestyle to exercise and have fun while engaging in the activity.
- **Address Safety Concerns:** Comprehensively address pedestrian and bicyclist fatalities, which are significantly higher than in the rest of the State, while promoting a safer environment to enjoy a recreational activity



# Government and Civic Support

- **Chuck Schumer**, *U.S. Senator*
- **Kristen Gillibrand**, *U.S. Senator*
- **Erik Kulleseid**, *New York State Parks Commissioner*
- **Chip Gorman**, *Long Island Region Parks Commissioner*
- **Rose Harvey**, *New York State Parks Commissioner (former)*
- **Andy Beers**, *Executive Director, Empire State Trail*
- **Stuart Rabinowitz** and **Kevin Law**, *Co-chairs, Long Island REDC*
- **Fred Thiele**, *New York State Assembly*
- **Steve Englebright**, *New York State Assembly (former)*
- **Kimberly Jean-Pierre**, *New York State Assembly*
- **Phil Ramos**, *New York State Assembly*
- **Phil Boyle**, *New York State Senate (former)*
- **John Brooks**, *New York State Senate (former)*
- **Anna Kaplan**, *New York State Senate (former)*
- **Kevin Thomas**, *New York State Senate*
- **Alexis Weik**, *New York State Senate*
- **Steve Bellone**, *Suffolk County Executive*
- **Arnold Drucker**, *Nassau County Legislature*
- **Kara Hahn**, *Suffolk County Legislature*
- **Sarah Anker**, *Suffolk County Legislature*
- **Rich Guardino**, *Long Island Regional Planning Council*
- **Matt Cohen**, *Long Island Association*
- **Joe Martens**, *chair, ORDC*
- **Tom Wright**, *Regional Plan Association*
- **Terri Alessi-Miceli**, *Hauppauge Industrial Area-Long Island*
- **Phil Andrews**, *Long Island African American Chamber of Commerce*
- **Dave Kapell**, *The Rauch Foundation*
- **David Okorn**, *The Long Island Community Foundation*
- **Meme Hanley**, *Land Trust Alliance*
- **Mitch Pally**, *Long Island Builders Institute*
- **Rebecca Sanin**, *Health & Welfare Council of Long Island*
- **Lisa Ott**, *North Shore Land Alliance*
- **Eric Alexander**, *Vision Long Island*
- **Kristin Jarnagin**, *Discover Long Island*
- **David Reisfield**, *Long Island Greenbelt Conference*
- **Guy Jacobs**, *Nassau Hiking & Outdoor Club*
- **Tom Sexton**, *Rails to Trails Conservancy*
- **Sammy Chu**, *U.S. Green Building Council – Long Island*
- **Ragu Rajan**, *ReWild Long Island*
- **Ann Aurelio**, *Sierra Club Long Island*
- **Mike Vitti**, *CLIMB*
- **Denis Byrne**, *LIGHT*
- **Leah Golby**, *NYBC*



# Public Support

LONG ISLAND

Plan for an appetizing trail mix

Nonprofit's \$114M proposal would extend recreational paths across LI

BY JOAN GRALLA  
joan.gralla@newsday.com

Long Islanders could bike, walk or jog from Manhattan to Montauk on 175 miles of trails along roads, parks and utility rights of way under a new proposal unveiled on Tuesday.

The Trust for the Public Land's \$114 million plan mirrors the 750-mile-long Empire State Trail that will cost about \$200 million and run from Battery Park to Buffalo and Plattsburgh when finished next year.

The network of trails on Long Island will give outdoor lovers more options than increasingly overcrowded parks, make it easier for commuters to bike to the train, and pump up tourism, the nonprofit group said.

Running the east-west trail through the middle of the island's built up areas, which often have fewer places to exercise outside, will help correct this imbalance, the advocacy group's report said.

Further, 14 of Nassau's largest employers and six educational institutions are close to the proposed route; Suffolk's pattern is similar though the distances are farther.

About half the trails would run along roads; half would be off-road, probably paved or filled in with gravel. Sections might open as soon as two or three years, said the group, adding it would work to find funding.

**'Many benefits' touted**

Carter Strickland, the group's New York State director, said in a statement: "A trail on existing infrastructure that links together Long Island communities and parks will provide many benefits, including nearby opportunities for residents to get healthy by walking, jogging, or biking; sustainable transportation to jobs, neighbors, the train station, and a weekend adventure for friends, family, and

**NOW ONLINE**

See an interactive map of the planned trail routes in Nassau, Suffolk.

newsday.com/li

Hikers on a six-mile trail at Caumsett State Park in Lloyd Neck in September. A new proposal would create 175 miles of recreational trails on Long Island.

Envisioning a green alternative to roads

The trail network would aid tourism, transportation

A hiker makes her way along a trail in Flanders in October.

SOURCE: THE TRUST FOR PUBLIC LAND

LONG ISLAND

Plan for an appetizing trail mix

Nonprofit's \$114M proposal would extend recreational paths across LI

BY JOAN GRALLA  
joan.gralla@newsday.com

Long Islanders could bike, walk or jog from Manhattan to Montauk on 175 miles of trails along roads, parks and utility rights of way under a new proposal unveiled on Tuesday.

The Trust for the Public Land's \$114 million plan mirrors the 750-mile-long Empire State Trail that will cost about \$200 million and run from Battery Park to Buffalo and Plattsburgh when finished next year.

The network of trails on Long Island will give outdoor lovers more options than increasingly overcrowded parks, make it easier for commuters to bike to the train, and pump up tourism, the nonprofit group said.

Running the east-west trail through the middle of the island's built up areas, which often have fewer places to exercise outside, will help correct this imbalance, the advocacy group's report said.

Further, 14 of Nassau's largest employers and six educational institutions are close to the proposed route; Suffolk's pattern is similar though the distances are farther.

About half the trails would run along roads; half would be off-road, probably paved or filled in with gravel. Sections might open as soon as two or three years, said the group, adding it would work to find funding.

**'Many benefits' touted**

Carter Strickland, the group's New York State director, said in a statement: "A trail on existing infrastructure that links together Long Island communities and parks will provide many benefits, including nearby opportunities for residents to get healthy by walking, jogging, or biking; sustainable transportation to jobs, neighbors, the train station, and a weekend adventure for friends, family, and

**NOW ONLINE**

See an interactive map of the planned trail routes in Nassau, Suffolk.

newsday.com/li

Hikers on a six-mile trail at Caumsett State Park in Lloyd Neck in September. A new proposal would create 175 miles of recreational trails on Long Island.

Envisioning a green alternative to roads

The trail network would aid tourism, transportation

A hiker makes her way along a trail in Flanders in October.

SOURCE: THE TRUST FOR PUBLIC LAND

OPINION/EDITORIAL

Put safety first in creating Manhattan-to-Montauk trail

The Trust for Public Land is proposing a 175-mile trail from Battery Park to Montauk Point.



27east.com

YOUR CONNECTION TO THE HAMPTONS

EHI

6 Indoor, 20 Outdoor Game Arrangement, Clinics

175 Daniels Hole Rd, East Hampton

HOME

NEWS

COMMUNITY

SPORTS

HAMPTONS LIFE

REAL ESTATE

EVENTS

News

Publication: The Southampton Press

Feb 8, 2019 12:49 PM

Multi-Purpose Trail Pitched Spans Long Island-Wide

FEATURED

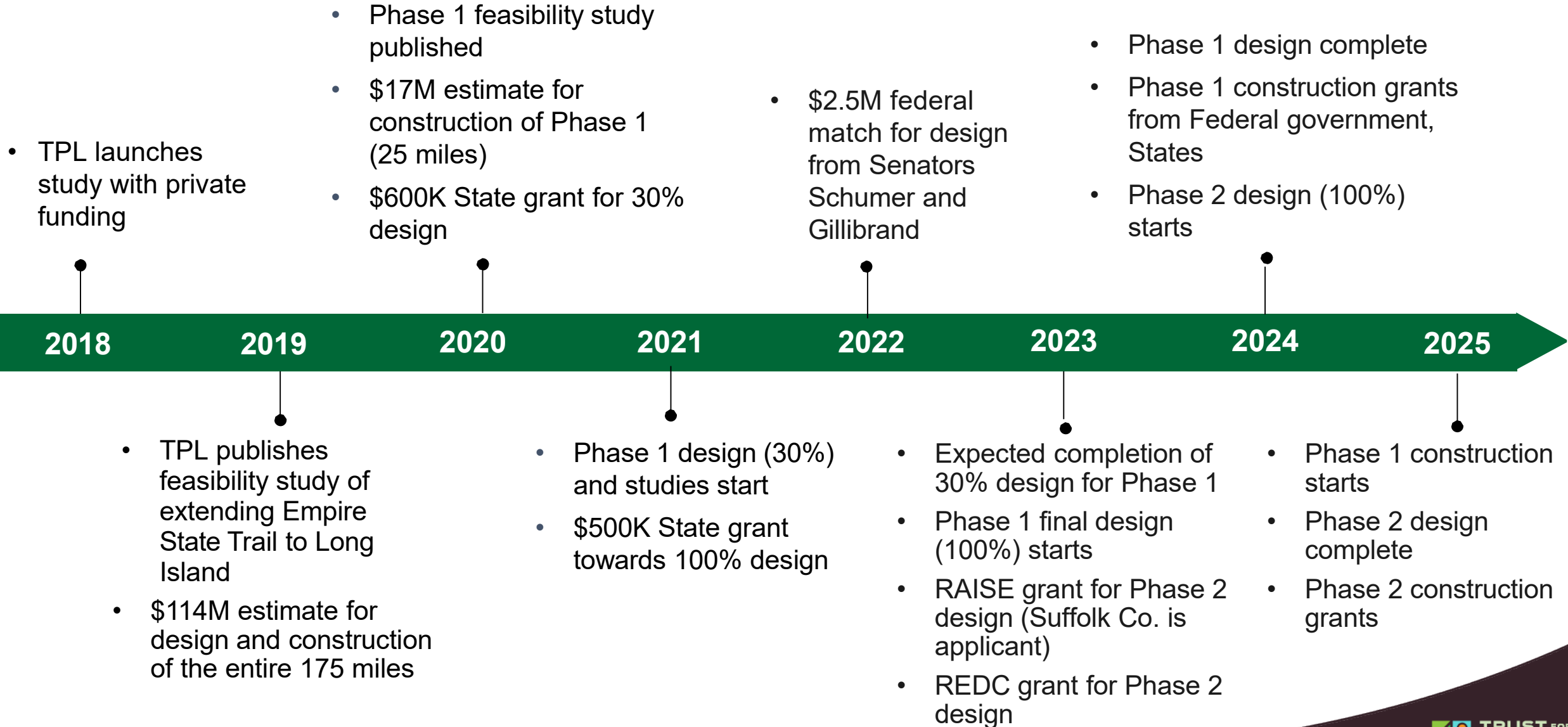
PROPOSAL WOULD CONNECT LONG ISLAND TO STATEWIDE TRAIL

Bike And Pedestrian Trail Across East End?

NOVEMBER 27, 2018

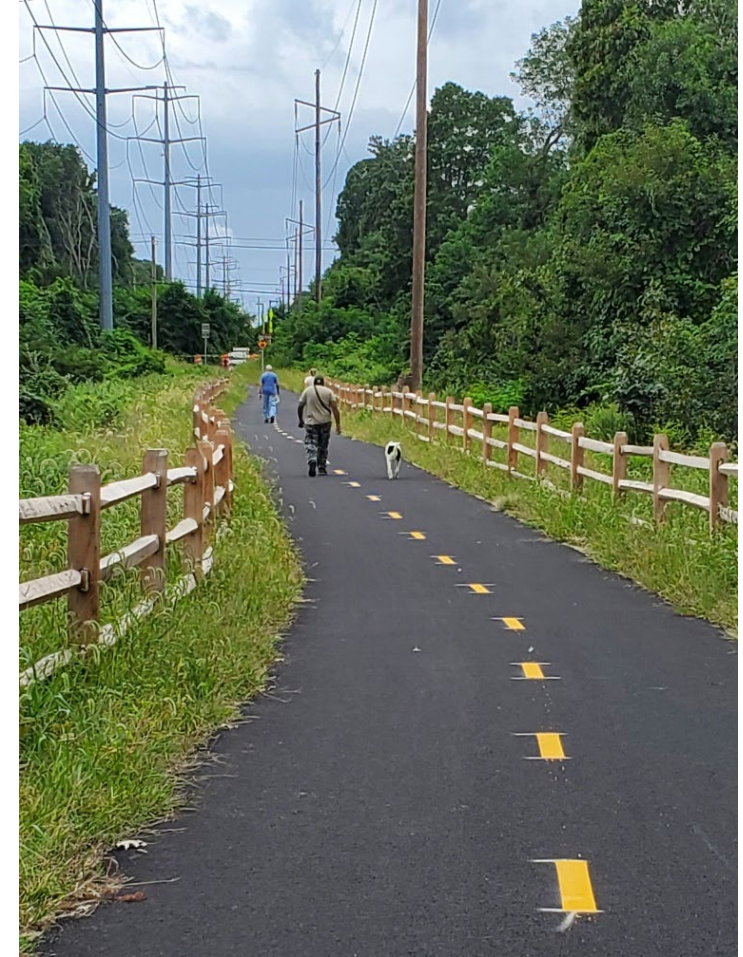


# Timeline





# Phase 1 Existing v. Future Conditions



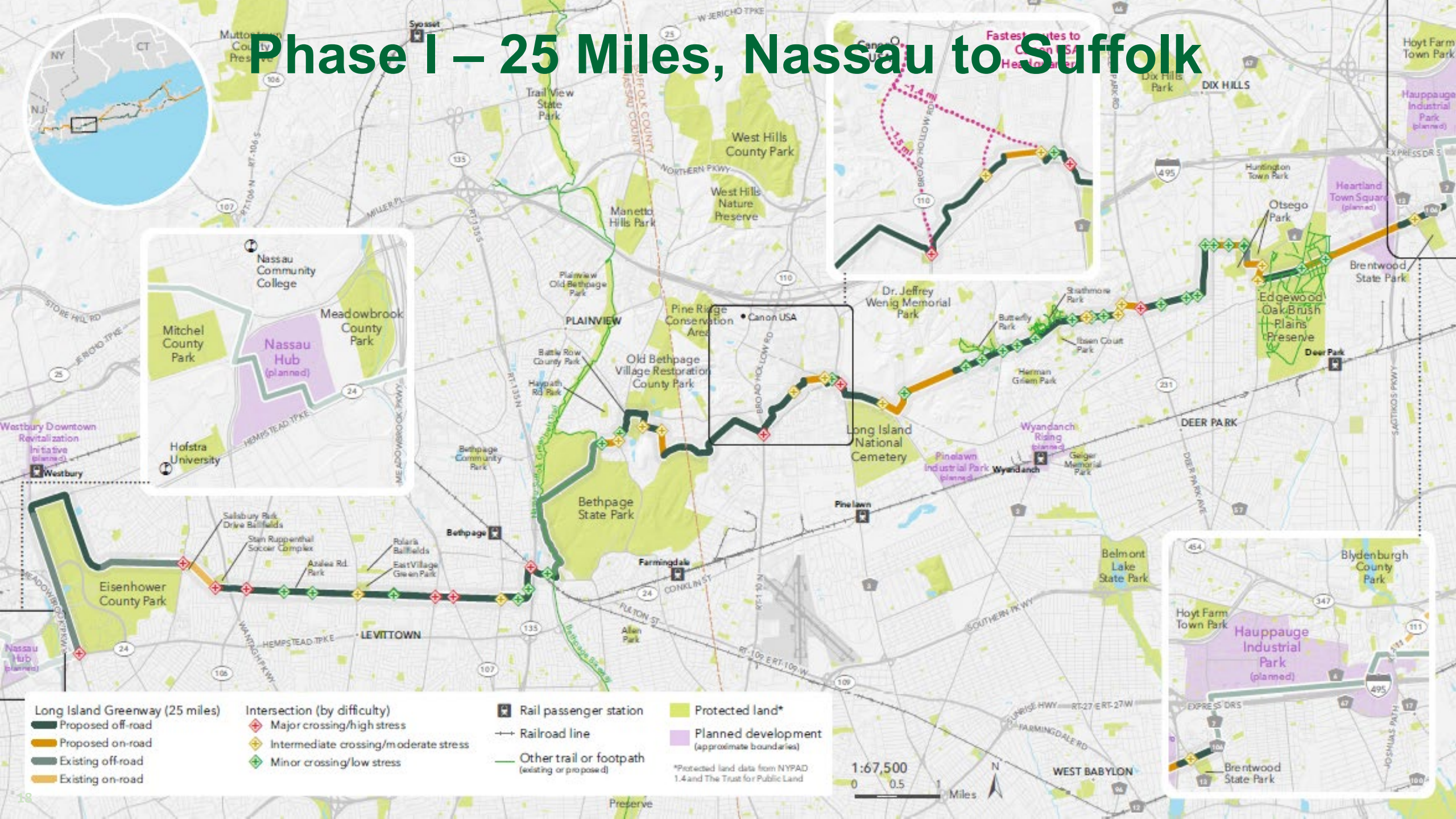


# Phase 1 Existing v. Future Trailheads



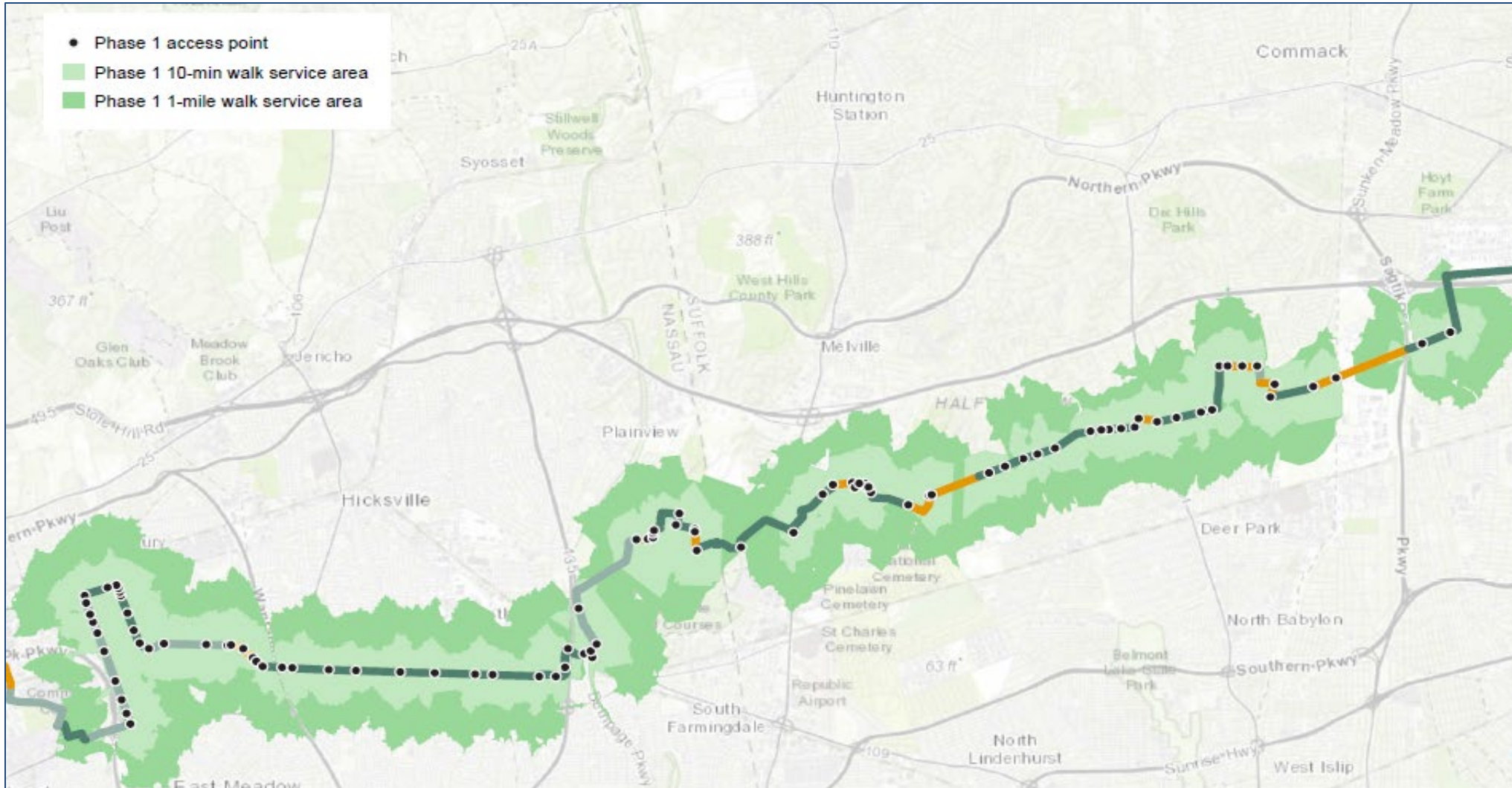


# Phase I – 25 Miles, Nassau to Suffolk



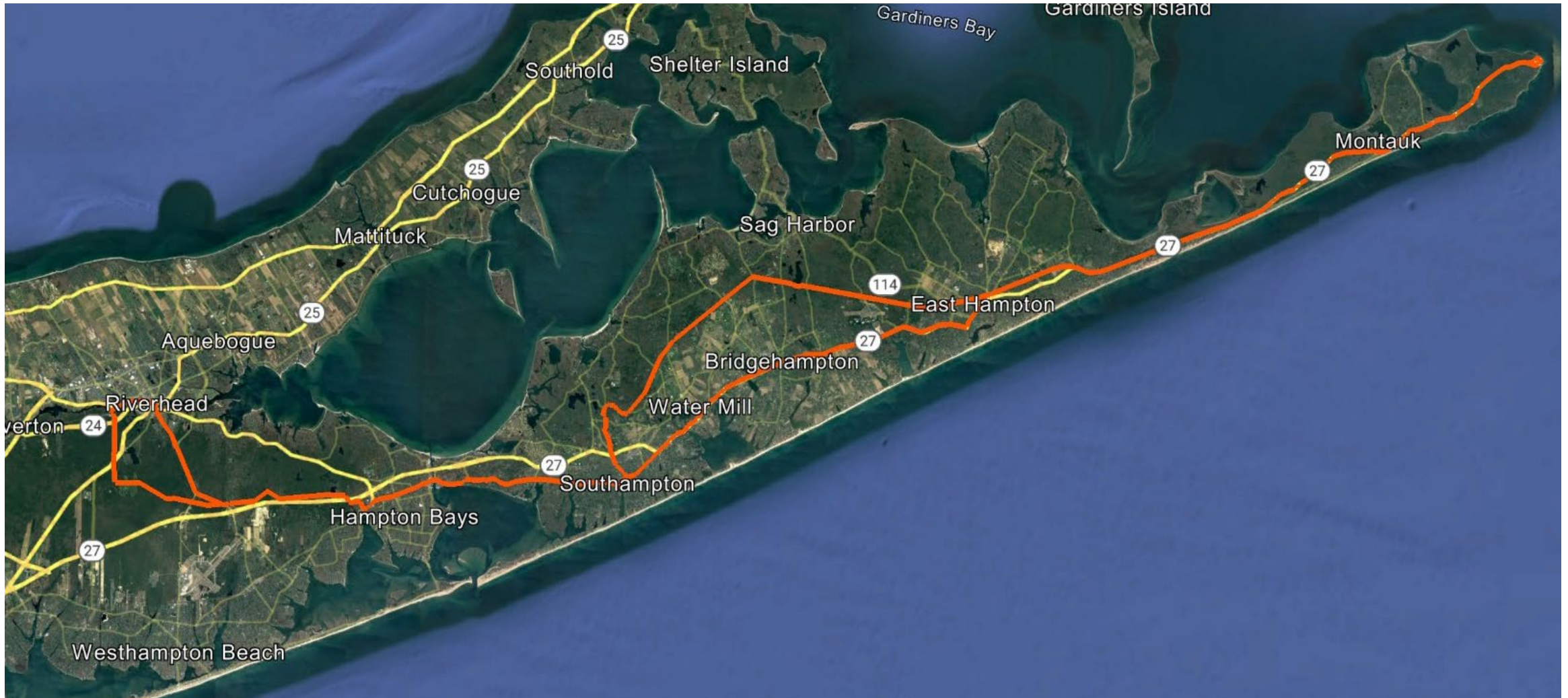


# Phase 1 Benefits and Connections



- 25-mile trail
- 128,000 residents within a mile (31% non-white, 35% under 75% of MHI)
- 13 Parks
- 9 Communities
- 36 schools and universities within a mile

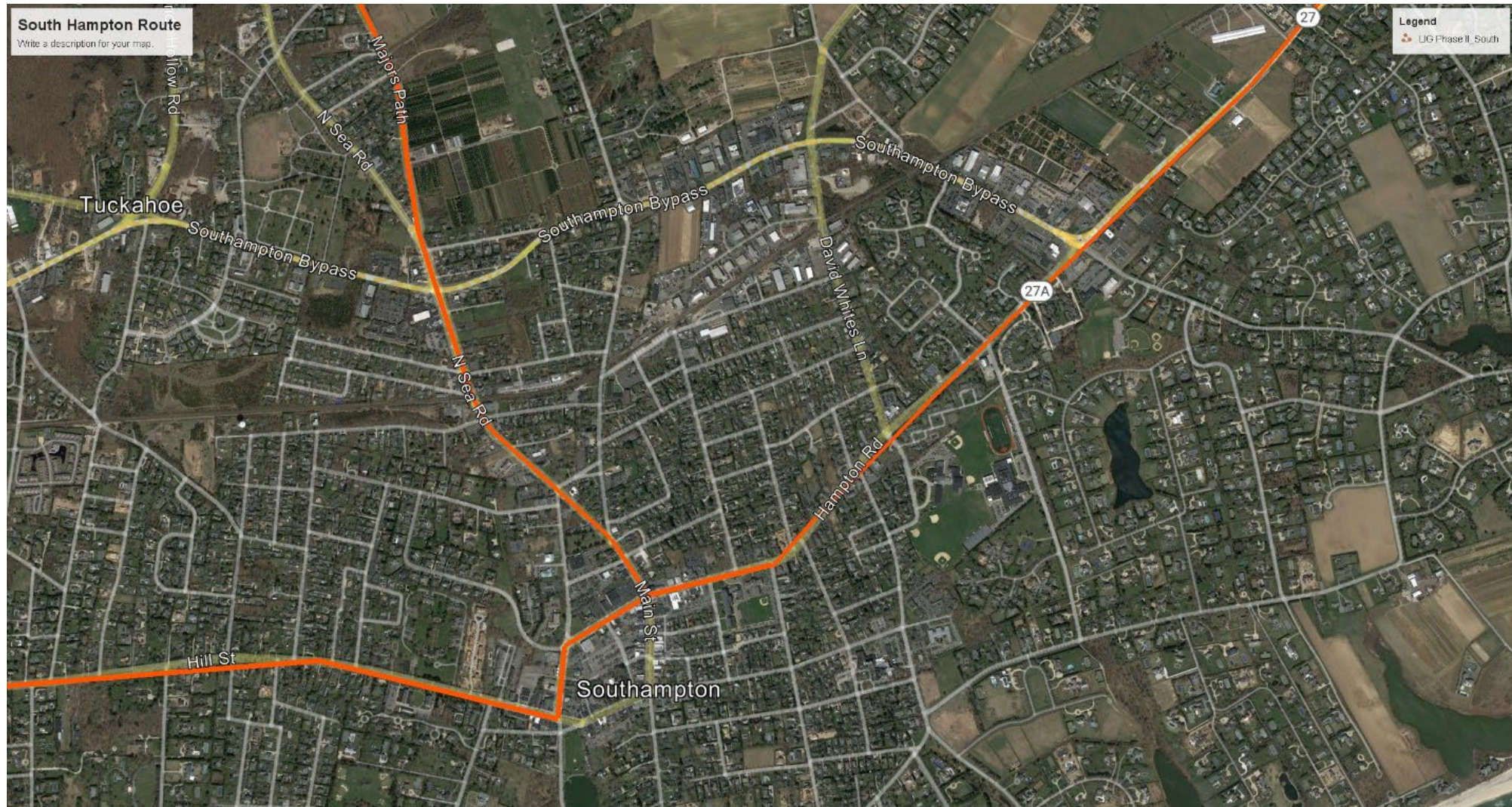
# Potential Phase 2 Route



Note: concept leverages routes identified through the Suffolk County Hike-Bike Master Plan, and any final route will be identified through the design process and engagement with the public and state, county, town, and village officials as appropriate.



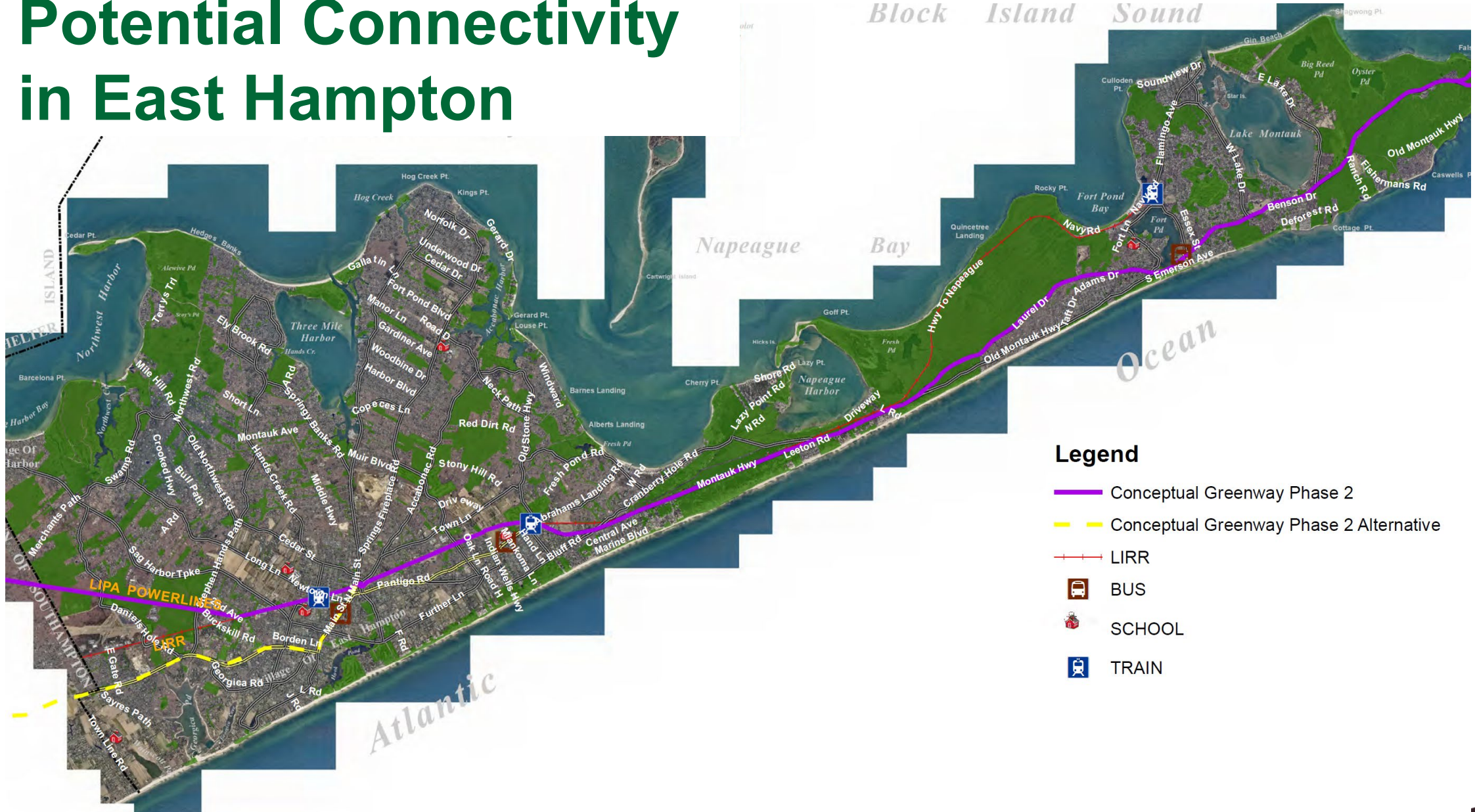
# Potential Route, Town of Southampton



Note: Consistent with the Suffolk County Hike-Bike Master Plan



# Potential Connectivity in East Hampton





# Phase 2 Next Steps

- February 28, 2023, USDOT RAISE grant application
- April 1, 2023, State budget adoption
- June 30, 2023, USDOT RAISE grant decisions
- July 31, 2023, State REDC grant application

# Leveraging State, Federal Funds



- Conservation Partnership Program (LTA) grants
- Private philanthropy
- \$600,000 NYS REDC grant

- \$500,000 NYS REDC grant
- \$2,500,000 Community Project Funding grant administered by HUD
- Private philanthropy

- State EPF
- State Bond Act
- American Recovery Plan
- US DOT – RAISE, TAP/CMAQ
- NEA – Our Town and Art Works
- HUD – CDBG
- NPS – LWCF Stateside
- NPS – LWCF ORLP
- Legislative allocations





# Thank You!

Carter Strickland  
VP, Mid-Atlantic Region and New  
York State Director  
[Carter.Strickland@tpl.org](mailto:Carter.Strickland@tpl.org)